



Marco ion ANTERIOR SEGMENT IMAGINGSM

| HARDWARE | |
|----------------------|---|
| Type | Intra-Optics Beam-Splitter/Adapter |
| Beam-Splitter | 2-Position Lever; Down=100% to oculars; Up=70% to Camera/30% to oculars |
| Dimensions | 7" x 2.5" x 6.5 |
| Weight | 3 lbs |
| Image Capture via | Bluetooth activated Foot-Switch or Joystick Button (Marco Slit Lamps only) |
| Video Resolution/FPS | 1080p & 4K HD video recording (30 fps or 60 fps) |
| Camera* | Apple® iSight 8MP/1.5μ pixels (iPhone 6 Plus) or 12MP/1.22μ pixels (iPhone 6S Plus) |
| Display | Apple® Retina HD Display; 5.5-Inch Diagonal LED Backlit |
| Camera Resolution | 1920 x 1080 Pixels at 401ppi |
| Contrast Ratio | 1300/1 |
| Processor | A8 (6 Plus) & A9 (6S Plus) chip with 64-bit architecture |
| SOFTWARE | |
| Operating System* | Apple® iOS 9 & Higher |
| Export To | Local Network; Cloud Storage & iOS/Photos |
| Capture Modes | Still image or HD Video |
| Security | HIPAA Compliant; Password Protected; AES Encryption |
| Imaging Technology* | Apple®'s HDR, Focus Pixel, Optical Image Stabilization technology |
| Networking* | Via Wi-Fi Connection |
| Included in the Box | ion Beam Splitter/Adapter, ion Imaging App, Bluetooth Control Unit, Power Adapter with 2-USB ports, 6' USB Cable, Footswitch with 10' Cable, 10' Lightning iPhone Charging Cable, 10 Adhesive Cable Tie Mounts, 14 4" Cable Ties, 2 1" x 1" Adhesive Velcro and 2 Vinyl Lens Covers |

*Customer supplied items. Apple® is a trademark of Apple Inc.



All automated Marco technologies share data and integrate with leading EMR programs via Marco Connect software.

NI85000 BR-ION



EMPOWERMENT

Delivering your diagnosis – as you make it

Marco has redefined slit lamp imaging by combining a new intra-optics beam-splitter/camera adapter with the tremendous computing and imaging power of Apple® Technology. Together they create a highly sophisticated imaging system that emphasizes image quality, simplicity and efficiency.

Imagine combining all of the bulky components (digital camera, adapter, computer, monitor, multiple cables, keyboard, mouse, etc.) of the traditional photo slit lamp, into one sleek, attractive all-in-one device, all at your fingertips, never having to leave your slit lamp. Its function allows us to respect and remain consistent with, the fundamental slit lamp examination process—without compromise or disruption. Introducing ‘ion Imaging’ from Marco.

intuitive

- The world’s best known and most user friendly OS
- Simple but powerful proprietary Slit Lamp Imaging App designed by Ophthalmic Photographers
- Touch, click or tap to capture high resolution video or still images
- Diagnose, image, integrate & educate in seconds
- Educate your patients using the latest technology (Apple® TV or Mirroring App)
- Update software via the App Store
- Ergonomic “All-in-One” design (eliminating bulky cables, PC, monitor, keyboard, mouse and software)
- Start the App and you’re ready to capture

optimized

- All controls at your fingertips in heads-up display
- App specifically designed for Anterior Segment Imaging with patient demographics
- Speed of acquisition, integration to network and education for patients
- Unique “intra-optics” beam-splitter/adapter/mount
- Accommodates most “parallel style” slit lamps
- Harnesses the power of Apple® with its exclusive HDR, “Focus Pixel” technology & more
- Enhanced clinical workflow by decreasing disruptions
- Respects the fundamental SL examination process – without compromise
- Sleek non-intrusive design
- Bluetooth foot control, joystick or touch screen capture

networked

- Imaging capability in every exam room
- Wirelessly display your images on your exam room monitors
- Images instantly available in NAVIS-EX or for uploading to your EHR or PACS
- Archive, view, and share images immediately in the Cloud
- Bluetooth foot control or joystick capture

ion IMAGING

A dedicated Slit Lamp Imaging App that includes: HIPAA compliance, patient demographics, capturing of still (JPG or DICOM) images or HD video, review gallery, easy patient education, WiFi export to LAN for EMR or PACS integration and auto storage to the Cloud.

A system that you will want in every exam room, not missing the opportunity to capture, integrate and educate every diagnosis.



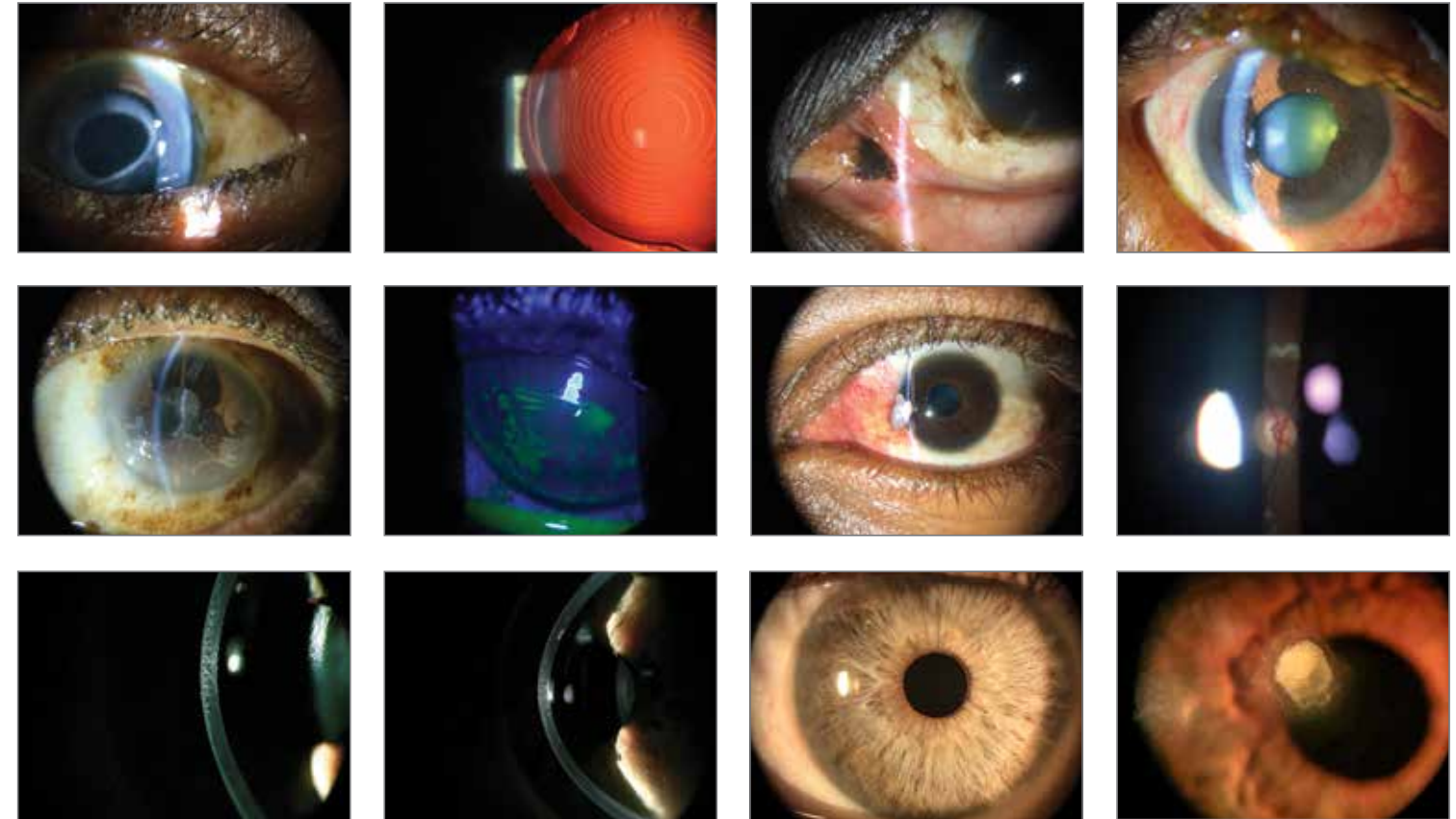
Ultra M5 Series Slit Lamp
Integrated connections for digital imaging systems. (Marco ION IMAGINGSM shown)

Compatibility

ion is compatible with over 25 different (new & old) slit lamp makes/models from many of the major ophthalmic manufacturers. Here, ion is interfaced to the New Ultra Marco M5

NAVIS-EX

NAVIS-EX is a fully networked imaging management system with features that enhance the diagnostic utility of the ion images. NAVIS-EX allows seamless integration with most EMR vendors.



“I really enjoy the simplicity of the ion imaging system. Patients enjoy being able to see images of their own eyes, especially when it's nothing too serious and I use the images for patient education as well as to document more severe conditions of the anterior segment. Once the images are automatically exported I can upload them into my EHR and I can easily share them with other doctors as needed.”

John Warren, OD
Warren Eye Care | Racine, WI

“The ion slit lamp camera allows us to acquire great pictures and it's extremely easy to use. The resolution of the final images are excellent and of publication quality. I would recommend it to anyone looking for an efficient, high quality imaging system.”

Paul H. Ernest, MD
Specialty Eye Institute | Jackson, MI

